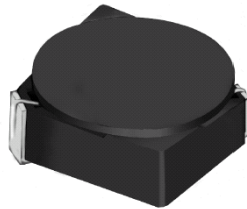


# SMD Power Inductor CDRH3D16



Halogen Free



## Description

- Ferrite drum core construction.
- Magnetically shielded.
- L × W × H: 4.0 × 4.0 × 1.8 mm Max.
- Product weight: 80mg (Ref.)
- Moisture Sensitivity Level: 1
- RoHS compliance.
- Halogen Free available.

## Environmental Data

- Operating temperature range: -40°C~+100°C (including coil's self temperature rise)
- Storage temperature range: -40°C~+100°C
- Solder reflow temperature: 260 °C peak.

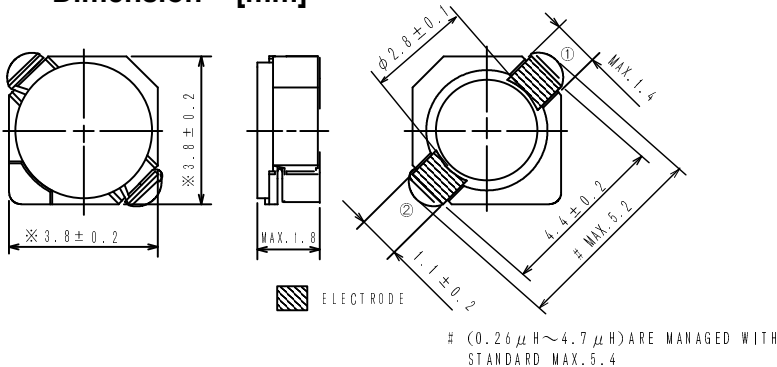
## Packaging

- Carrier tape and reel packaging
- 7.0" diameter reel
- 1000pcs per reel

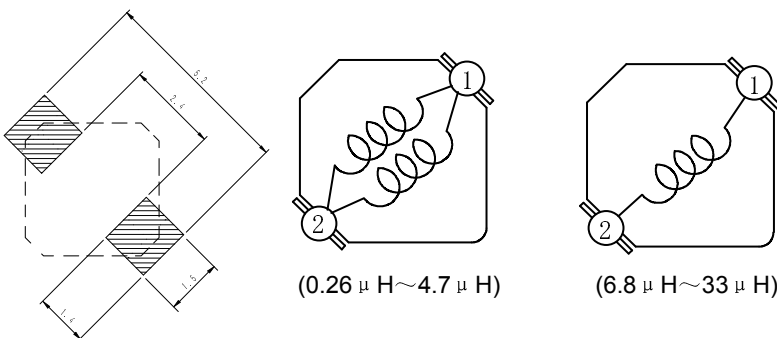
## Applications

- Ideally used in Mobile phone, PDA, MP3, DSC/DVC, Portable DVD, etc as DC-DC converter inductors.

## Dimension - [mm]



## Land pattern and Schematics - [mm]



# SMD Power Inductor CDRH3D16



## Electrical Characteristics

Part Name	Stamp	Inductance ( $\mu$ H) [ within ] ※1	D.C.R. (m $\Omega$ ) Max. (Typ.) (at 20°C)	Rated Current (A) ※2
CDRH3D16NP-R26NC	R	0.26 $\pm$ 35%	27.5(21)	3.60
CDRH3D16NP-R47NC	S	0.47 $\pm$ 35%	35( 27)	2.75
CDRH3D16NP-0R7NC	T	0.7 $\pm$ 35%	43( 33)	2.25
CDRH3D16NP-1R1NC	U	1.1 $\pm$ 35%	50( 38)	1.90
CDRH3D16NP-1R5NC	A	1.5 $\pm$ 30%	52( 40)	1.55
CDRH3D16NP-2R2NC	C	2.2 $\pm$ 30%	72( 55)	1.20
CDRH3D16NP-3R3NC	E	3.3 $\pm$ 30%	85( 65)	1.10
CDRH3D16NP-4R7NC	G	4.7 $\pm$ 30%	105( 80)	0.90
CDRH3D16NP-6R8NC	I	6.8 $\pm$ 30%	170(130)	0.73
CDRH3D16NP-100NC	K	10 $\pm$ 30%	210(160)	0.55
CDRH3D16NP-150NC	M	15 $\pm$ 30%	295(225)	0.45
CDRH3D16NP-220NC	O	22 $\pm$ 30%	430(330)	0.40
CDRH3D16NP-330NC	Q	33 $\pm$ 30%	675(520)	0.32

※1. Inductance measuring condition: at 100kHz.

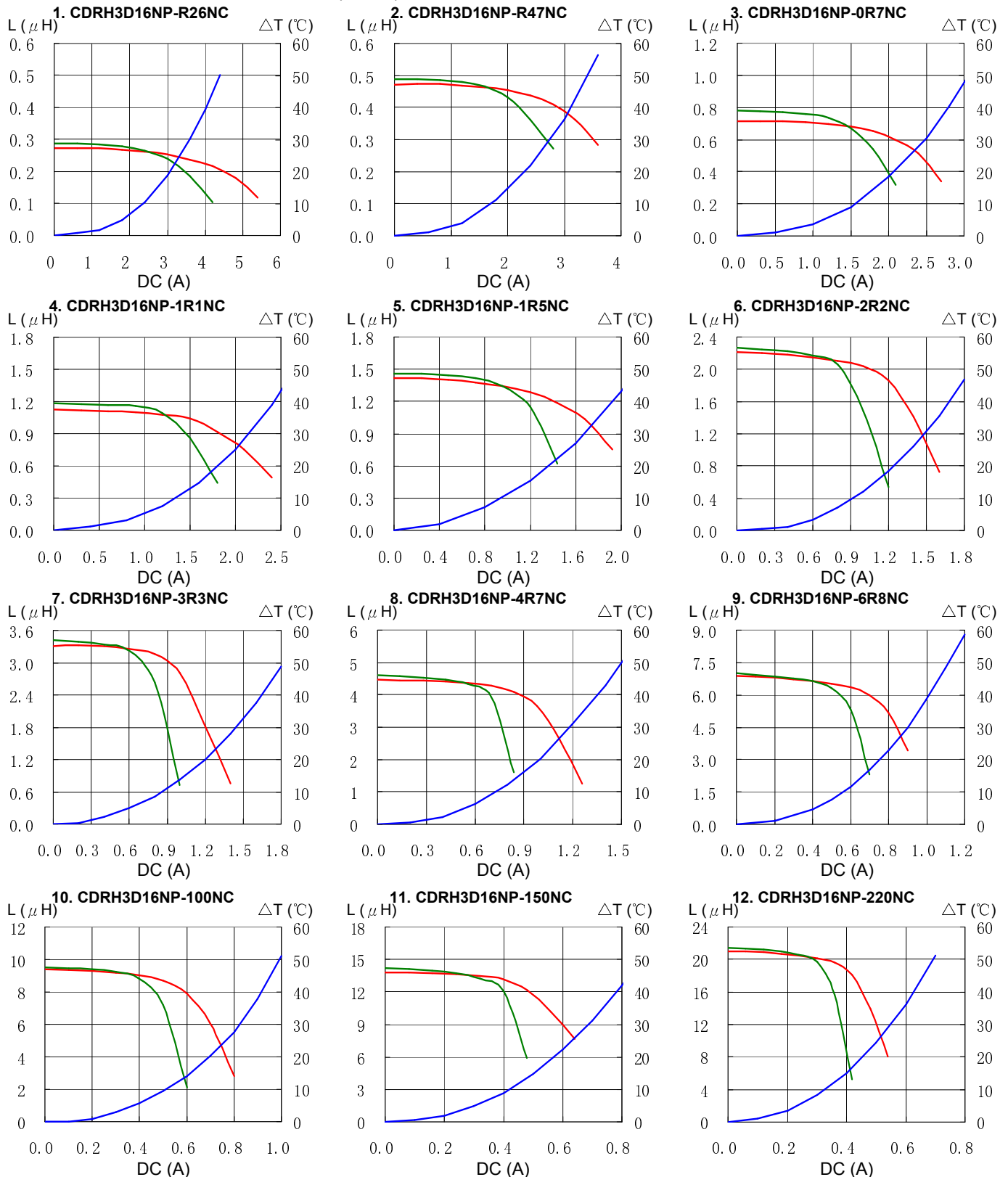
※2. Rated current: The DC current at which the inductance decreases to 65% of its nominal value or when  $\Delta t=30^{\circ}\text{C}$ , whichever is lower ( $T_a=20^{\circ}\text{C}$ ).

# SMD Power Inductor CDRH3D16



## Saturation Current & Temperature Rise Graph

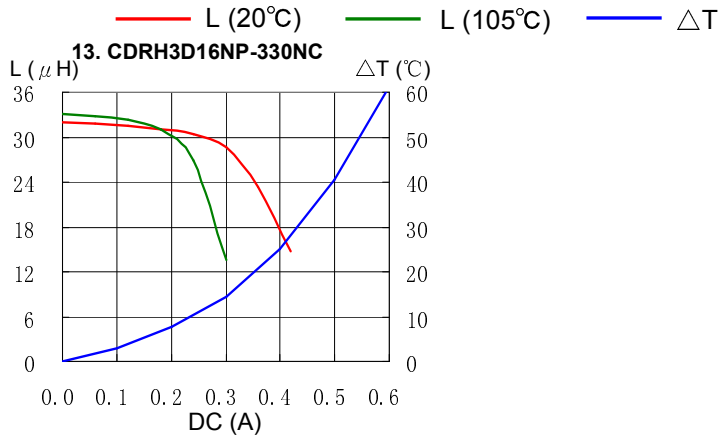
— L (20°C) — L (105°C) —  $\Delta T$



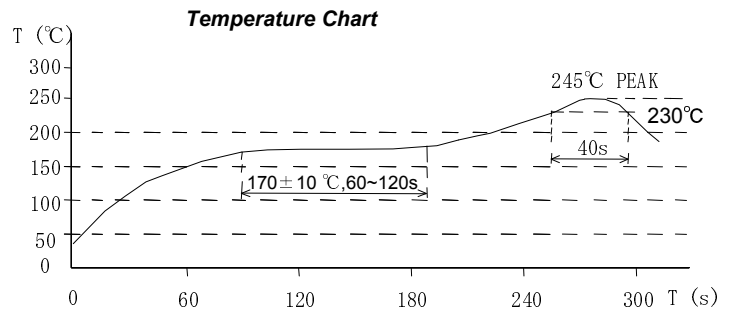
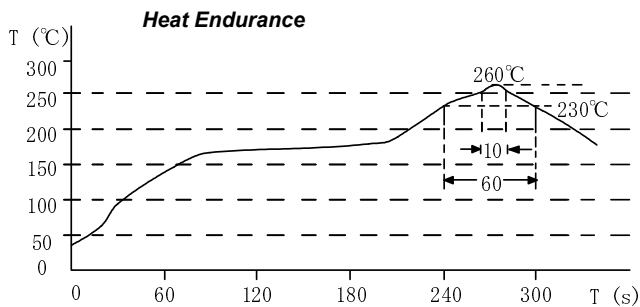
# SMD Power Inductor CDRH3D16



## Saturation Current & Temperature Rise Graph



## Solder Reflow Condition



Please refer to the sales offices on our website - <http://www.sumida.com>

### Hong Kong

Tel.+852-2880-6781  
FAX.+852-2565-9600  
[sales@hk.sumida.com](mailto:sales@hk.sumida.com)

### Saitama(Japan)

Tel.+81-48-691-7300  
FAX.+81-48-691-7340  
[sales@jp.sumida.com](mailto:sales@jp.sumida.com)

### Chicago

Tel.+1-847-545-6700  
FAX. +1-847-545-6720  
[sales@us.sumida.com](mailto:sales@us.sumida.com)

### Shanghai

Tel.+86-21-5836-3299  
FAX.+86-21-5836-3266  
[shanghai.sales@cn.sumida.com](mailto:shanghai.sales@cn.sumida.com)

### Seoul

Tel.+82-2-6237-0777  
FAX.+82-2-6237-0778  
[sales@kr.sumida.com](mailto:sales@kr.sumida.com)

### Oberzell

Tel.+49-8591-937-0  
FAX. +49-8591-937-103  
[contact@eu.sumida.com](mailto:contact@eu.sumida.com)

### Shenzhen

Tel.+86-755-8291-0228  
FAX.+86-755-8291-0338  
[shenzhen.sales@cn.sumida.com](mailto:shenzhen.sales@cn.sumida.com)

### Singapore

Tel.+65-6296-3388  
FAX.+65-6841-4426  
[sales@sg.sumida.com](mailto:sales@sg.sumida.com)

### Neumarkt

Tel.+49-9181-4509-110  
FAX. +49-9181-4509-310  
[infocomp@eu.sumida.com](mailto:infocomp@eu.sumida.com)

### Taipei

Tel.+886-2-8751-2737  
FAX.+886-2-8751-2738  
[sales@tw.sumida.com](mailto:sales@tw.sumida.com)

### San Jose

Tel.+1-408-321-9660  
FAX.+1-408-321-9308  
[sales@us.sumida.com](mailto:sales@us.sumida.com)